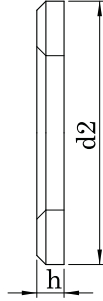
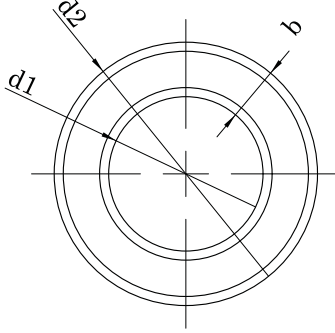


**DIN 6916****ÇELİK KONSTRUKSİYON PULU  
PLAIN WASHERS FOR STEEL CONSTRUCTION  
FLACHE UNTERLEGSCHIBE FÜR STAHLKONSTRUKTIONEN****Technical Informations / Teknik Bilgiler**

Thread size / Anma çapı (d)		M12	M16	M20	M22	M24	M27	M30	M36
d1	min.	13,00	17,00	21,00	23,00	25,00	28,00	31,00	37,00
	max.	13,27	17,27	21,33	23,33	25,33	28,52	31,62	37,62
d2	min.	23,48	29,48	36,38	38,38	43,38	49,00	54,80	64,80
	max.	24,00	30,00	37,00	39,00	44,00	50,00	56,00	66,00
h	min.	2,70	3,70	3,70	3,70	3,70	4,40	4,40	5,40
	max.	3,30	4,30	4,30	4,30	4,30	5,60	5,60	6,60
gr/p		7,03	14,60	19,60	24,30	30,60	50,20	63,20	115,00
Vickers ( HV )					295 - 350 HV.				

Values are given in millimeters. / Değerler milimetre olarak verilmiştir.